



Established in 1896

Redlands Camera Club is a group of amateur, serious-amateur, and professional photographers who are interested in sharing experiences and advancing their skills. Anyone with similar interests is encouraged to attend a meeting; no cost or obligation. We meet at 7:00 pm on the first and third Mondays of every month at **Redlands United Church of Christ**, 168 Bellevue Avenue, Redlands, CA.

January, 2007

HAPPY NEW YEAR

Please note: Normally, we meet on the first Monday of the month. However, this month, our first Monday falls on January 1st. Therefore, we will postpone our first meeting until Monday the 8th.

We will resume our normal meetings the following week, the 15th. This means we will have meetings on two consecutive Mondays this month.

Details are in the "Programs" section of this newsletter.

COMING ATTRACTIONS



PHOTOGRAM

Distributed on the 1st of each month. Deadline for all submissions is the 4th Thursday of each month.

© Redlands Camera Club and its Contributors. The contents of the *Photogram* are copyrighted. No material herein may be reproduced in any manner without the written permission of the Editor or the material's specific contributor.

Editor: Steve Felber
(951) 769-6898
SNFelber@Yahoo.com

NEW MEMBERS

Kathy Posen

Yvonne Gadbois is currently taking **Frank Peele's** Photoshop Elements class and he encouraged her to attend an RCC meeting.

She lives in Redlands and volunteers at the *Family History Center*, which researches family genealogies.

She shoots with at Fuji 3800 digital camera and likes to photograph her 11 grandchildren, nature in general, and especially flowers.

Curt Westbrook is retired as *Professor Emeritus of Accounting at Cal State, San Bernardino*.

Once again, our inveterate **Frank Peele** invited him to an RCC meeting and he joined.

A Nikon D70 is his current equipment of choice and he is learning basic Photoshop techniques. He has traveled with Elder Hostel to the *Grand Tetons, Yellowstone, the Rockies* and other sites with groups that are specifically interested in photography. He also likes to attend nature photography workshops.

Redlands Camera Club P.O. Box 7261 Redlands, CA 92375

www.RedlandsCameraClub.com

CLUB OFFICERS

President: *Kish Doyle* **Vice President:** *Judith Sparhawk*

Secretary: *Jerry Reece* **Treasurer:** *Dennis Jackson*

CHAIRS

Circulation: *Dennis Jackson* **Competition:** *Bruce Bonnett*

Education: *Fred Nicoloff* **Exhibits:** *Allison Hiebert* **Field Trips:** *Rick Strobaugh*

Hospitality: *Bessie Reece* **Librarian:** *Mike Reid* **Member-At-Large:** *Bill Nord*

Membership: *Kathy Posen* **Photogram Editor:** *Steve Felber*

Programs: *Judith Sparhawk* **Publicity:** *Nancy Yowell* **Webmaster:** *to be announced*

Certified Professional Photographer

Personalized instruction in award-winning photographic techniques

Frank Peele

Frank.Peele@verizon.net

1309 Pacific St. Redlands, CA 92373

(909) 798-7999

pic PHOTO IMAGING CENTER
Professional Color Laboratory

pic

851 S. Mt. Vernon Ave.
Colton CA, 92324
Suite 7A
Between
The 10 & 215 Freeway

(909) 825-1709
(909) 825-1171
photo.image.center@sbcglobal.net

Alejandro Martinez
Owner

Office DEPOT
What you need. What you need to know.

- SUPPLIES
- ELECTRONICS
- COPY PRINT CENTER
- FURNITURE

M-F 7-9
SAT 9-9
SUN 10-7

602 Orange Street
Redlands, CA 92374
Phone: (909) 793-2563 Fax: (909) 793-1523

UPCOMING PROGRAMS

Judith Sparhawk

JANUARY 8TH

Roundtable Discussions: Frank Peele

Because our usual first meeting date lands on New Years Day, when many members are traveling or have family plans, the meeting has been delayed one week, to January 8th.

It will be an informal roundtable discussion on any topic photographic. This is a great time to ask those questions that you've been dying to ask, share ideas, get to know your fellow club members, etc.

Come; it will be fun!

JANUARY 15TH

How To Please The Judges; Gene Lambert

Just in time for the Digital Competition program in February, long-time RCC member, **Gene Lambert**, will give a program on "*How To Please The Judges*".

There are certain features of photography that judges look for in determining their scores. Understanding some of this information can help you make good choices when selecting your (winning) images.

It will also help you judge and improve your photography on an everyday basis; something we can all use.

Come hear **Gene** on this important topic.



Editor's Note: As most of you know, **Judith** underwent hip replacement surgery shortly before Christmas. The surgery went well and she is home recuperating. Rehabilitation will be an arduous process, and we may or may not see her on a regular basis for a while.

We wish her a complete recovery, so that she may join us in our hopping, skipping, and jumping endeavors in the near future!

HOSPITALITY

Bessie Reece

Refreshment volunteers for the month

January 8

No volunteers

January 15

**Dennis Plourd, Allen Jaszcar
and Dorothy Cunningham**

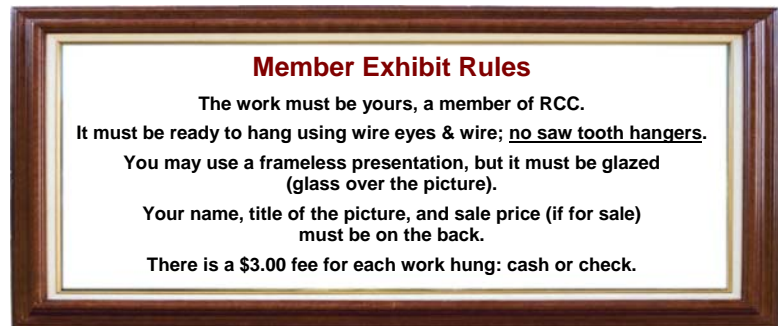
Please arrive at 6:45 to help set up and stay after a few minutes to clean up. The average attendance has been around 50-60 people. Finger food such as cookies, chips, vegetables, and fruit are the easiest to handle. The club provides all paper goods, coffee, and tea. If you cannot attend, please contact **Bessie Reece** at (951) 845-2950 or BJReece@DC.RR.COM. Thanks again for all your support!

EXHIBITS

Allison Hiebert

Exhibit Schedule for 2007

<u>Where</u>	<u>Hanging Dates</u>	<u>Take-In Times</u>
<i>Redlands Community Hospital</i>		
<i>Redlands City Hall</i>		
<i>Redlands Community Hospital</i>		
<i>Redlands City Hall</i>		
<i>Redlands Community Hospital</i>		
<i>Redlands City Hall</i>		
<i>Redlands Community Hospital</i>		
<i>Redlands City Hall</i>		
<i>Redlands Community Hospital</i>		



FIELD TRIPS

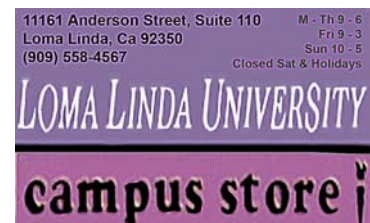
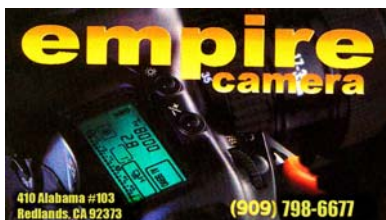
Rick Strobaugh

I would like to do a field trip at least every other month. I am planning a trip to Keys Ranch in Joshua Tree National Park in early January, on a Monday if the weather cooperates. The park prefers photo trips to be on weekdays to avoid the regular guided tours on weekends. I would like an overcast day to avoid the problems with shadows. The ranch has a little bit of everything scattered all over the property. Photo opportunities include old cars, stoves, the ranch buildings, covered wagon frames, wagon wheels, a windmill, bed frames, glass items, old tools, and much more. Cost is \$15.00 per carload for entry to the park, and \$5.00 per person for the two-hour tour. Tripods are OK and everyone is allowed to roam the immediate area for photos.

A couple other places on the horizon are: Descanso Gardens again, but a little earlier in the spring in order to catch the tulip bloom; the daffodil fields in Running Springs; Calico Ghost Town; and the Long Beach Aquarium of the Pacific.

If anyone has other places they would like to explore, e-mail me at RPDRUNNER@msn.com.

There are many places within an hour's drive that would be worth shooting. A wet winter and spring may bring opportunities for wild flowers at places such as the Poppy Preserve near Lancaster.



RCC Bulletin Board

On a space-available basis, Notices, Requests and For Sale ads may be posted by any member. 300 dpi JPEG pictures may be included. All postings must be photography-related and include your name and contact information. See *Photogram Submissions* box for deadline and submission information.

Fine Arts
INSTITUTE
of the San Bernardino County Museum

Call for Entries

"Colors of Winter"

Juried Open Exhibition • Monetary Awards

Thursday, February 1, 2007
Take In 10:00 am to 2:00 pm

Wednesday, February 28, 2007
Take Down 10:00 am to 2:00 pm

San Bernardino County Government Building - Rotunda
385 North Arrowhead, San Bernardino, CA

Open to all artists 18 years of age or older. FAI reserves the right not to accept any artwork it considers unsuitable/inappropriate for general viewing.

Artwork previously exhibited at the San Bernardino County Museum or County Government Building is not eligible.

Media Pastels, oil, acrylic, watercolor, drawing, mixed-media, photography, original graphics, digital art. No macrame, crafts, video, sculpture, or installments. Watercolor, pastels, photography, pen and ink, and original graphics must be covered with Plexiglas or glass, and completely prepared for hanging with screw eyes and wire attached. No hooks.

Fees FAI members \$5.00 per entry, maximum three entries
Non-members \$7.00 per entry, maximum three entries

For further information, please contact
Patrick Escobar 909-886-8175.

FOR SALE – never used

\$15.00

Radio Shack NiCad batter charger & conditioner

Accepts
AAA, AA,
C & D
battery sizes



Steve Felber (951) 769-6898 or SNFELBER@yahoo.com

MEMBERS' GALLERY

Winter's Comina

SHARE YOUR WORK

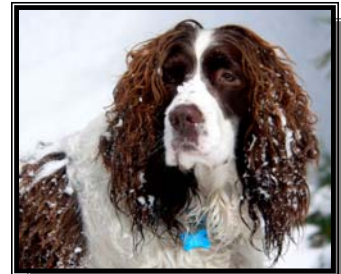
300 ppi JPEG, no larger than 5"x 5".



Reservations For Two
Nancy Rascon



Antwerp By Night
Marc Piron



Bubba
Kish Doyle



Gathering Storm
Dan Griffith



Pacific Storm
Christine French



Goodnight Mt. Moran
Scott Gutentag



Bryce
Alice Anderson



On Golden Pond
Bessie Reece



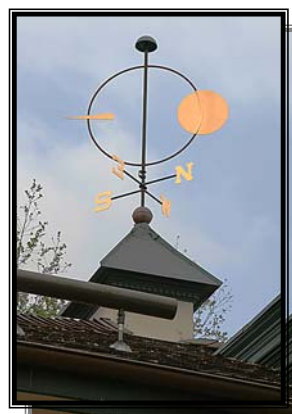
Desperate Dusk
Allison Hiebert



Witchy Woman
Wayne Wood



Waterfall
John McCormack



Weather Or Not
Kathy Posen



Rain In San Gimignano
Dennis Plourd

WHERE WE MEET...

Want to join or renew your membership?

Complete this form and bring it to a meeting, along with \$20 annual dues.

Make check payable to: Redlands Camera Club

Name: _____ Phone: (____) ____ - ____

Street Address: _____

City: _____ ST: ____ ZIP: _____

E-Mail: _____

New Member Annual Renewal



Redlands Camera Club **Redlands United Church of Christ**
7:00 p.m. -- 1st & 3rd Mondays **168 Bellevue, Redlands, CA**

PHOTOGRAM
 Redlands Camera Club
 P.O. Box 7261
 Redlands, CA 92375