



Established in 1896

Redlands Camera Club is a group of amateur, serious-amateur, and professional photographers who are interested in sharing experiences and advancing their skills. Anyone with similar interests is encouraged to attend a meeting; no cost or obligation. We meet at 7:00 pm on the first and third Mondays of every month at Redlands United Church of Christ, 168 Bellevue Avenue, Redlands, CA.

February, 2006

Annual Print Competition



Do you
enjoy
a little
head-to-head
competition?

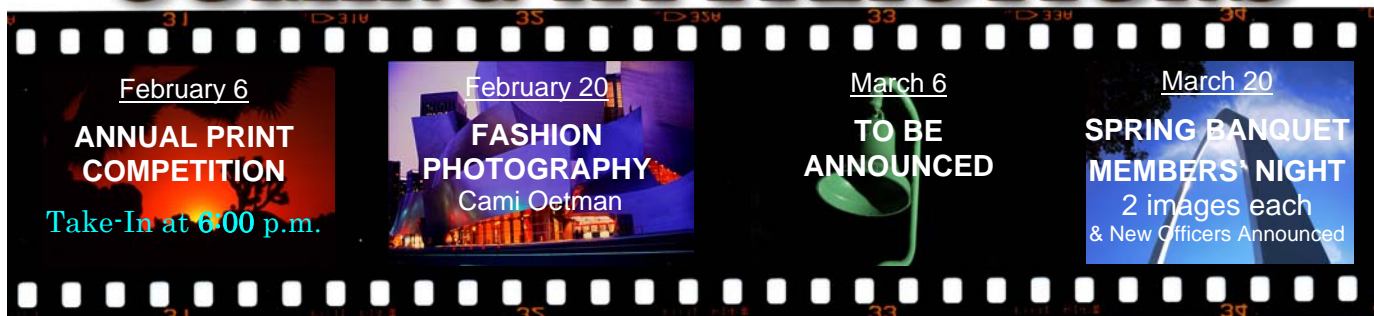


Enter our Annual Print Competition!

Or just come to enjoy an evening of great images.

February 6th Take-in at 6:00 p.m. Competition at 7:00

COMING ATTRACTIONS



PHOTOGRAM

Distributed on the 1st of each month.
Deadline for all submissions is the
3rd Thursday of each month.

© Redlands Camera Club and its Contributors.
The contents of the *Photogram* are copyrighted.
No material herein may be reproduced in any manner
without the written permission of the Editor
or the material's specific contributor.

Editor: Steve Felber
(951) 769-6898
SNFelber@Yahoo.com

TEN QUICK TIPS FOR PERFECT PRINTS

- 1. Good resolution.** The standard unit of measurement for your picture's sharpness is dots per inch, or dpi. You should be sure that the electronic file of your photo is at least 240 dpi for smaller photos (4 x 6 and below) and 300 dpi for larger ones (5 x 7 and above).
- 2. Best format.** Even if your image has high resolution, you'll still need to save it in the correct format: TIFF or JPEG. For best printing results, always save your pictures in the TIFF format. Although this format is somewhat larger than others, it is also the most reliable. The JPEG format is preferable for e-mailing photos.
- 3. Quality control.** Use a good image-editing program to get rid of annoying dust marks and specks on your photos. (The printer will pick them up even if they're very small.) You can also use the sharpening filter in your image-processing program to enhance the edges of your print.
- 4. DPI dilemmas.** You'll want a printer with at least four colors and 600 x 600 dpi. Otherwise, your photos may turn out pixilated (objects will have jagged edges). Many printers now offer up to 4,800 x 1,200 dpi on premium photo paper.
- 5. Driver settings.** Use the most current version of the printer driver available for your printer. Then be sure to set your preferences to the highest print quality. Try all the options the printer driver offers you, as sometimes you can find variables, like advanced color settings, which will improve your prints.
- 6. Printer resolution setting.** Printing at a resolution from 240 to 300 dpi is a safe bet for top-quality photos.
- 7. Paper settings.** Paper settings generally control the amount of ink that is put on the paper. Make sure you're using the right setting for your chosen paper. The Plain Paper setting uses the most ink, while Glossy Film and Photo Paper settings use the least. When you find a setting that works for a particular paper type, take note of the setting so you'll be able to get the same results when you use the paper again.
- 8. Clean and clear.** Run the cleaner function in your printer every now and then to get maximum efficiency.
- 9. Paper selection.** Although it's readily available, plain copier paper doesn't work as well for photographs that you want to share or keep. You'll get the best results if you use a photo paper specifically designed for your printer. Be sure to test a variety of paper types before buying large quantities. Find out whether your printer can create 4 x 6 prints (they're just like what you'd get from a photo lab!).
- 10. Drying time.** Before you frame a photo or add it to a scrapbook, be sure to give it enough time to dry. Although most inks and papers are designed to dry within an hour or so, variables such as temperature, direct light, and humidity can change drying time. If the photo will come into contact with any other materials, such as framing glass, it is a good idea to let the print dry for about 24 hours. If you're printing multiple copies of pictures, it's a good idea to remove pictures from the printer as they come out and set them aside. This will avoid any accidental smearing or running.



UPCOMING PROGRAMS

Kish Doyle

FEBRUARY 6TH

Annual Print Competition; Cynthia Long

The Annual Print Competition will take place tonight. *The doors will be open for print take-in at 6:00 p.m.*

Entry limit per person will be six prints. The categories will be: **People, Places, Close-up, Animals, Photojournalism** and **Miscellaneous**.

Each print must be mounted on a firm substrate. However, presentation is at the discretion of entrant; matted and framed, behind glass or not, etc.

As the judges will be viewing the prints at a distance we ask that no print be smaller than 80 inches² (for example: 8" x 10", 4" x 20", etc.).

If you have any questions, feel free to contact me at any time at (951) 743-1295.

FEBRUARY 20TH

Fashion Photography, Pursuing A Dream: Cami Oetman

Cami Oetman has been photographing fashion subjects, starting with her Barbie dolls, since she was young. She will be talking about the hard work and the fun she has experienced along the way. This is not a technical talk, but a program about a passion and what it takes to build the rapport and get the shot.

PHOTOSHOP & ELEMENTS

Keyboard Shortcuts

EDITING FUNCTION	KEYBOARD SHORTCUT	MENU BAR COMBINATIONS
To Zoom In	Press Control + (plus key)	View>Zoom In
To Zoom Out	Press Control - (minus key)	View>Zoom Out
To Fit on Screen	Press Control 0 (zero, not oh)	View>Fit on Screen
To View at 100%	Press Control Alt 0 (zero, not oh)	View>Actual Pixels
To Show/Hide Rulers	Press Control R	View>Rulers
To Show/Hide Guides	Press Control ; (semi-colon)	View>Show>Guides
To Hide Palettes & Toolbox	Press Tab	
To Hide Palettes but not Toolbox	Press Shift Tab	

CONFIGURING IMAGES FOR DIGITAL PROJECTION

Images on CDs should be:

- Image Size: long dimension = 1024 pixels (14.222")
- Resolution: 72 ppi
- File Format: JPEG
- Color Space: sRGB preferred
- Do not include other data on the CD.
- File name: 2 digits-first initial last name.JPEG

Example: 01-KDoyle.jpeg

FOR PRINT DISPLAY

Print images should be:

- Image Size (whichever is larger): long dimension must be at least 10 inches

or

total image must be at least 80 inches square (8x10, 4x20, etc.)

- Mounted on a firm surface
- Mounting surface may be temporary or permanent, oversize or not.

NEW MEMBER PROFILES

Judith Sparhawk

Miranda Mott is a new member of RCC. She has only recently become interested in photography, being introduced by family members. Miranda is currently in her Senior year at Redlands East Valley High School.

She now has a Fuji digital camera and is enjoying taking nature photographs, including flowers. She also likes photographing her dogs. Welcome, Miranda!

Welcome also to **Ken Wonderly**, who joined at the last RCC meeting. He lives in Redlands and works as a Cost Estimator for a local cabinet company.

He has been involved in photography since childhood, but considers himself to be an "experienced beginner". He has used a Pentax K1000 camera for 18 years and is considering purchasing a digital camera.

Ken enjoys outdoor activities, including hiking in the mountains and in the desert; so he likes taking landscapes, animal, and flower shots.

He also participates in triathalons, biking, and swimming, so is in good physical condition! We look forward to seeing his work in future meetings.

HOSPITALITY

Bessie Reece

Save the date! March 20, 2006 will be the Annual Banquet, 6:30 PM. We will have a catered dinner. More details to follow.

Refreshment volunteers for the month

February 6

Host

Char Sveen

Refreshments

Ty Bookman & Chris Sveen

February 20

Host

Refreshments

Judith Sparhawk & Jennie Duncan

Hosts: Please arrive by 6:45 to set up coffee pot, tables, etc., then stay after to tear down.

Refreshments: Please bring finger food only.

If you cannot attend, please contact **Bessie Reece** at (951) 845-2950 or BJReece@DC.RR.COM. Thanks again for all your support!

Redlands Camera Club P.O. Box 7261 Redlands, CA 92375

www.RedlandsCameraClub.com

CLUB OFFICERS

President: *Frank Peele*

Vice President: *Kish Doyle*

Secretary: *Jerry Reece*

Treasurer: *George Johnson*

CHAIRS

Circulation: *Dennis Jackson* **Competition:** *Cynthia Long* **Education:** *Fred Nicoloff*

Exhibits: *Bob Forsythe & John McCormack* **Field Trips:** *James Whitehill*

Hospitality: *Bessie Reece* **Librarian:** *Mike Reid* **Member-At-Large:** *Larry Cowles*

Membership: *Judith Sparhawk* **Photogram Editor:** *Steve Felber*

Programs: *Kish Doyle* **Publicity:** *Nancy Yowell* **Webmaster:** *Jeff Kreider*

EXHIBITS

John McCormack and Bob Forsythe

The city of Fontana is having its annual Cultural Arts Showcase. The Artists showcase promotes local artists by displaying their work in order to create and maintain interest in art in the local and surrounding communities.

The Fontana Gallery is particularly interested in photographs rendered by film, although digital prints are also acceptable. Please submit a showcase application or a resume and five examples of your work. Entries may follow a central theme.

You must be able to submit 10 to 25 works of art for the exhibit.

The entry deadline for the Spring Showcase is February 20th, 2006. Work submitted on this date will be shown April 4th-June 19th.

Anyone who wishes additional information may contact:

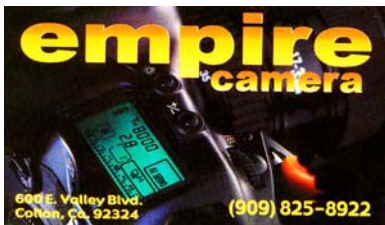
Courtney Hodnick
 Community Service Department
 9460 Sierra Avenue
 Fontana CA 92335
 (909) 428-8393 fax (909) 350-2402
 e-mail chodnick@fontana.org.

Exhibit Schedule for 2006

<u>Where</u>	<u>Hanging Dates</u>	<u>Take-In Times</u>
Redlands Community Hospital	February 25	12:00 – 2:00
Redlands City Hall	March 30	3:00 – 5:00
Redlands Community Hospital	April 29	12:00 – 2:00
Redlands City Hall	May 25	3:00 – 5:00
Redlands Community Hospital	June 24	12:00 – 2:00
Redlands City Hall	July 27	3:00 – 5:00
Redlands Community Hospital	August 26	12:00 – 2:00
Redlands City Hall	September 28	3:00 – 5:00
Redlands Community Hospital	October 28	12:00 – 2:00
Redlands City Hall	November 30	3:00 – 5:00
Redlands Community Hospital	December 30	12:00 – 2:00

For information, contact:

John McCormack (909) 797-3916
GFTJMC.JMCGFT@Verizon.net
 or Bob Forsythe (951) 787-1989
BNCF@Netzero.com



Want to join or renew your membership?

Complete this form and bring it to a meeting, along with \$20 annual dues.

Make check payable to: Redlands Camera Club

Name: _____	Phone: (____) ____ - _____
Street Address: _____	
City: _____	ST: ____ ZIP: _____
E-Mail: _____	
New Member <input type="checkbox"/>	Annual Renewal <input type="checkbox"/>

TIPS AND TECHNIQUES

The Photoshop Guys.com

In October 2005, the first episode of **Adobe Photoshop TV** aired at www.PhotshopGuys.com, a weekly video pod-cast from the National Association of Photoshop Professionals (NAPP).



The program features tips, step-by-step tutorials, and the latest Photoshop and digital imaging news in an entertaining format – all provided by *The Photoshop Guys*, Scott Kelby, Dave Cross, and Matt Kloskowski.

0

RCC Bulletin Board

0

On a space-available basis, Notices, Requests and For Sale ads may be posted by any member. 300 dpi JPEG pictures may be included. All postings must be photography-related and include your name and contact information. See *Photogram Submissions* box for deadline and submission information.

AWARDED

*Photographer
Of The Year*

RCC's own

John Brantley

Gold Medal – Advanced

Coachella Valley

Desert Camera Club

*2nd year in a row!
Congratulations John!*



ARTS Council for San Bernardino County
468 West 5th Street, San Bernardino, California 92401

Arts Council for San Bernardino County
presents:
The Great Outdoors
December 6, 2005 – March 31, 2006
A photographic exhibition of panoramic
scenes capturing the beauty throughout
California by artist, Margaret (Peggy) Burnett.

ATTENTION MAILED RECIPIENTS OF THE PHOTOGRAM

We recently learned of damage caused by the post office machinery. We have made corrections per their suggestion.

If your *Photogram* still arrives damaged, please let us know as soon as possible.

Contact Steve Felber at (951) 769-6898
or at SNFELBER@yahoo.com

WANTED

Members' images to share on the *Gallery* page of the *Photogram*.

Please e-mail to SNFELBER@yahoo.com

MEMBERS' GALLERY

SHARE YOUR WORK

300 ppi JPEG, no larger than 5"x 5" (will probably be reduced for publication).



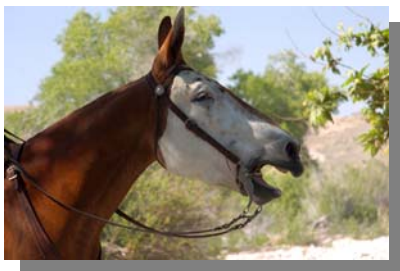
Four Donkeys
Gene Lambert



Close-Up
Allison Hiebert



Angry Cloud
Dan Griffith



Neigh
Kish Doyle



Morning Glow
Ron Anderson



Not A Bed Of Roses
Alice Anderson



Pinecone
Nancy Rascon



Philips Academy - Exeter
Bob Forsythe



Mono Lake
Bessie Reece



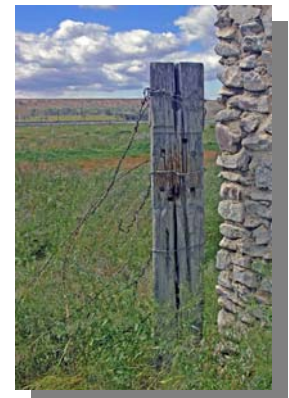
Fill 'er Up
Jerry Reece



Flame Garden Bird
Ralph Solis

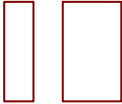
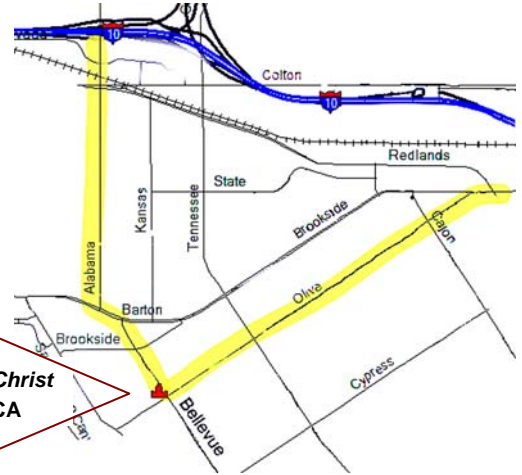


Red Rug
Dale Showman



Post
John McCormack

WHERE WE MEET...



Redlands Camera Club
7:00 p.m. -- 1st & 3rd Mondays

Redlands United Church of Christ
168 Bellevue. Redlands. CA

PHOTOGRAM
Redlands Camera Club
P.O. Box 7261
Redlands, CA 92375